



Name: 50W+50W stereo bluetooth digital power amplifier board  
Model:XY-AP50L

Supply voltage: DC5-12V/24V (the higher the voltage, the greater the output power)

Transmission distance: 15m

Bluetooth version: 5.0

Number of channels: left and right channels

Adapted speakers: 30W-200W 4 ohms 8 ohms 16 ohms

Colour:Black

Material:plastic

Size:52x52x16mm

Package Contents:

1\* 50W+50W stereo bluetooth digital power amplifier board

Precautions for use:

1. Use the power amplifier board as far away as possible from the WIFI signal (router)
2. The recommended power supply voltage is DC 5~12V/24V, if it exceeds 26V, the chip will burn.
3. The power supply current is recommended to be above 2A.
4. The speaker cable should not be too long, and ensure that it is suitable within 1 meter
5. Pay attention to static electricity protection. Before touching the power amplifier board, you must first release the static electricity on your hands to avoid static electricity from breaking down the chip. Bluetooth chips are more sensitive to static electricity.
6. It is recommended to adapt the speaker with a rated power of 40W and above to avoid the speaker from heating and burning

Only the above package content, other products are not included.

Note: Light shooting and different displays may cause the color of the item in the picture a little different from the real thing. The measurement allowed error is +/- 1-3cm.

The APP currently only supports Chinese and English.

**APP download :**

Apple IOS: search in the Apple store: sinilink

Android users, download from Google Market, search for 'sinilink' to download

# Product parameter

Product name:	<b>Mini version</b> 50W+50W stereo bluetooth digital power amplifier
Product number:	XY-AP50L
Supply voltage:	DC: 5~24V (the higher the voltage, the greater the output power)
Bluetooth version:	5.0
Transmission distance:	15 meters (unobstructed)
Number of channels:	Left and right two channels (stereo)
Adaptation speaker:	30W~200W 4Ω 8Ω 16Ω
Protection mechanism:	Power reverse connection protection, short circuit protection, self-recovery overheating protection

**Note: The output power of the power supply should be greater than the output power of the amplifier, otherwise it will affect the sound quality**

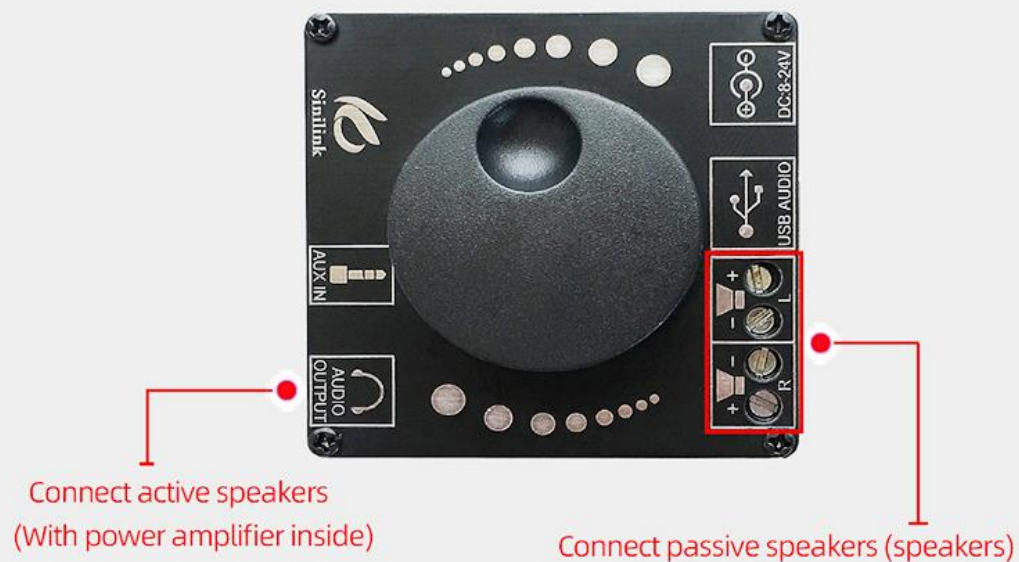
12V→8Ω/15W+15W, 4Ω/20W+20W

15V→8Ω/18W+18W, 4Ω/more than the 30W+30W

19V→8Ω/32W+32W, 4Ω/more than the 45W+45W

24V→8Ω/40W+40W, 4Ω/more than the 50W+50W

**Wider application-can be connected to passive speakers and active speakers**



# Mobile APP control

Support Android Apple system



APP control

## APP visual operation play mode

Volume Sound Effect Up and Down Song Control Play Pause Play Mode



More functions will be upgraded in the future, so stay tuned

DC:5-24V power supply

USB sound card/U disk

SPKL SPKR



Spin button  
volume adjustment

"Short press" to  
play/pause

"Long press" on/off



Sinilink

Please look for the  
Sinilink logo

3.5mm  
Audio output

AUX  
Audio input

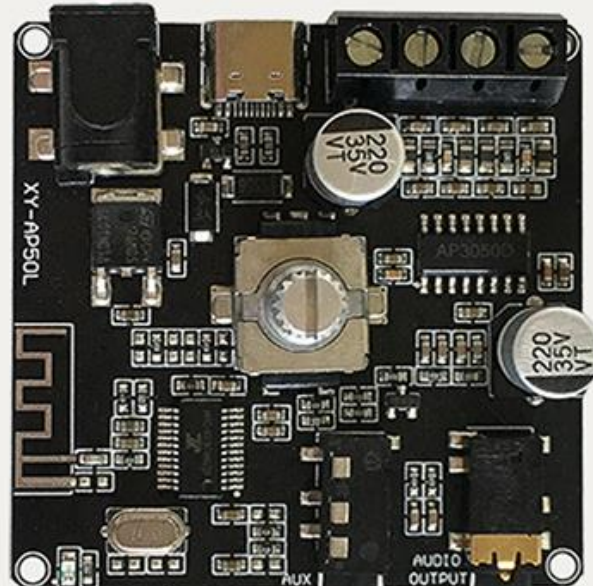
Sinilink logo on the back

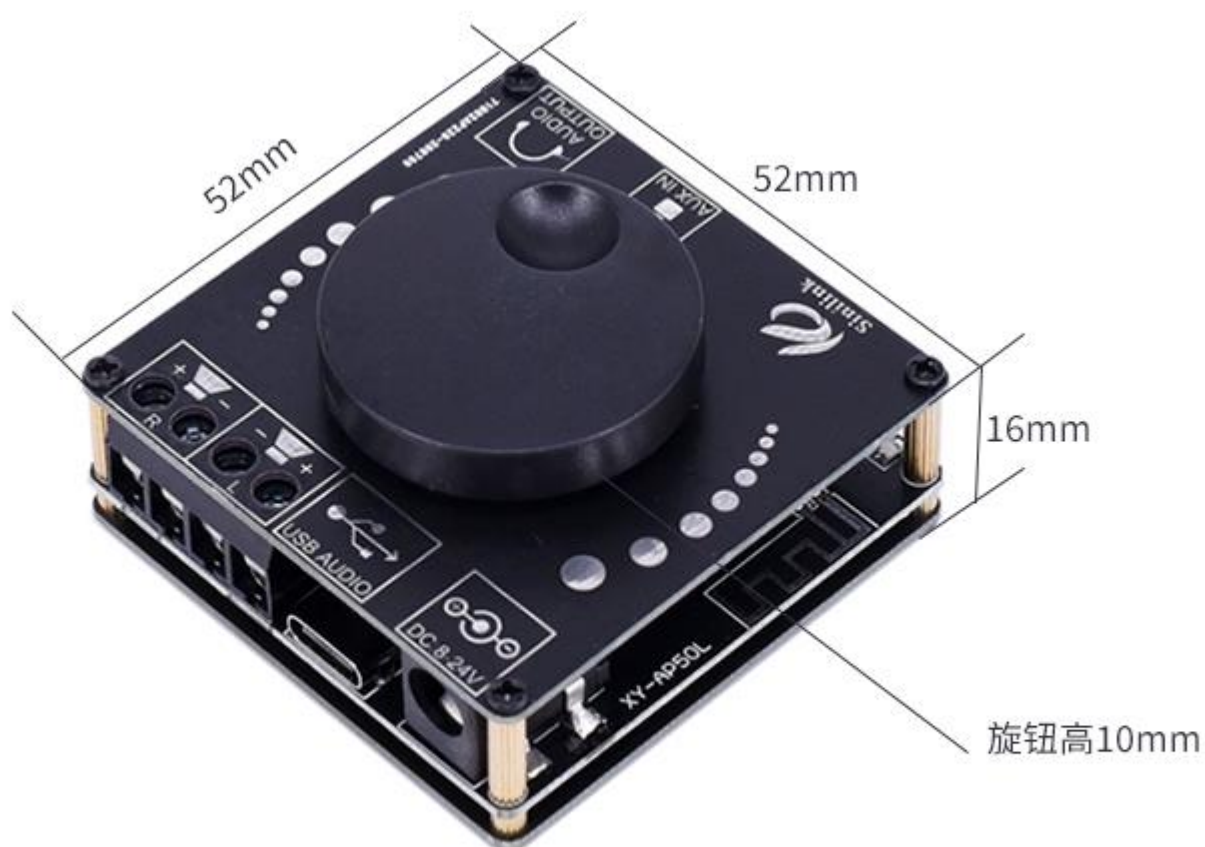


Free DC adapter



High-quality copper DC plug,  
long life





产品发货清单  
需要自己简单组装






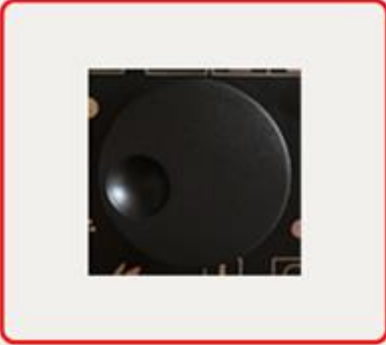
重量: 77g



Product comes with APP

Please look for the APP icon 

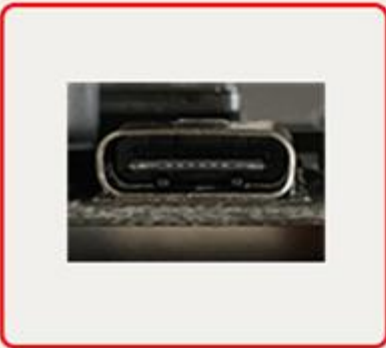
Synchronize Sinilink-APP, more functions and more extensions



Encoder adjusts the volume, feels smoother

"Short press" to play/pause

"Long press" on/off



Use Type-c adapter to adapt U disk to play MP3, WAV format music

Type-c interface to connect to a computer as a sound card



Adopt 5.5/2.1 socket, compatible with 5.5/2.1, 5.5/2.5 plug

Equipped with DC adapter, convenient for non-standard plug wiring

# Support U disk playback



Plug in the U disk, open the APP to switch the "U disk" mode, accompanied by a prompt sound, enter the U disk playback mode.

# Computer sound card function



Can output a signal with better sound quality than the computer connected to the speaker

Connect the Bluetooth board to the computer with the data cable, open the APP, click to switch the "sound card" to complete the switch and play with a prompt sound. Open the computer player software to play music.

Note: Most computers will automatically recognize the sound card to play, some computers may need to be set as shown below





## Steps for connecting mobile phone APP to Bluetooth



1. Click on the little yellow dot



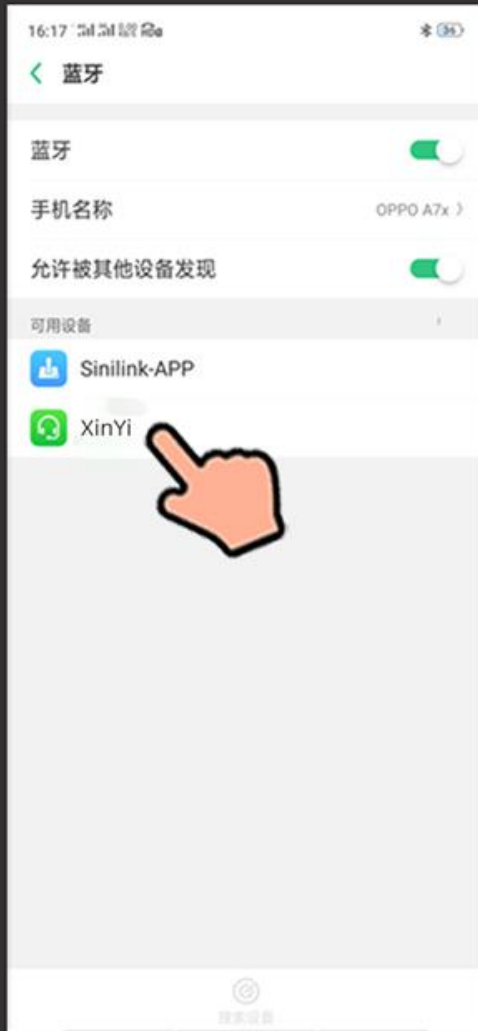
2. Click to connect Bluetooth device



4. connection succeeded



3. Search Bluetooth connection Sini-link-APP



When the Bluetooth board is powered on, the blue LED flashes quickly and enters the Bluetooth connection mode; the mobile phone searches for XinYi, clicks "XinYi" to complete the connection and the sound is played, at this time the blue LED enters a long light state; open the mobile phone to play music, The blue LED flashes slowly and enters the playback state.